

Neata[®]

+ Super energy

AGM Battery series

Datasheet : NT12-150(12V150AH)

| | |
|--|--------------|
| Nominal Voltage | 12V |
| Number of cell | 6 |
| Design Life | 10 years |
| Nominal Capacity 77°F(25°C) | |
| 10 hour rate (15.0A, 10.8V) | 150Ah |
| 5 hour rate (24.5A, 10.5V) | 122.5Ah |
| 1 hour rate (103A, 9.6V) | 103Ah |
| Internal Resistance | |
| Fully Charged battery 77°F(25°C) | ≤3.5 mOhms |
| Self-Discharge | |
| 3% of capacity declined per month at 20°C(average) | |
| Operating Temperature Range | |
| Discharge | -20~60°C |
| Charge | -10~60°C |
| Storage | -20~60°C |
| Max. Discharge Current 77°F(25°C) | 970A(5s) |
| Short Circuit Current | 2800A |
| Charge Methods: Constant Voltage Charge 77°F(25°C) | |
| Cycle use | 2.40-2.45VPC |
| Maximum charging current | 40.0A |
| Temperature compensation | -30mV/°C |
| Standby use | 2.20-2.28VPC |



Wide Range Temperature



Warranty



Maintenance Free



AGM Technology



easy use

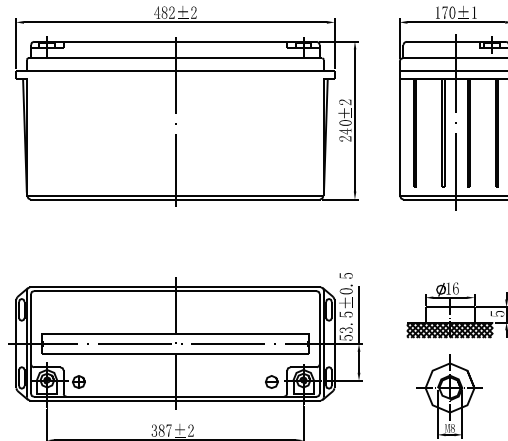


long life

Mechanical Characteristics

| | |
|--------------------------|------------|
| Length(mm / inch) | 482 / 19.0 |
| Width(mm / inch) | 170 / 6.69 |
| Height(mm / inch) | 240 / 9.45 |
| Total Height(mm / inch) | 240 / 9.45 |
| Approx. Weight(Kg / lbs) | 40 / 88.0 |

* Weight deviation: ± 3%



Technical Characteristics

Discharge Constant Current (Amperes at 77°F25°C)

| End Point | | | | | | | | | |
|------------|-------|-------|-------|------|------|------|------|------|--|
| Volts/Cell | 10min | 15min | 30min | 1h | 3h | 5h | 10h | 20h | |
| 1.60V | 340 | 283 | 186 | 103 | 42.9 | 27.6 | 15.4 | 8.07 | |
| 1.65V | 322 | 268 | 177 | 98.7 | 41.1 | 26.4 | 15.3 | 8.03 | |
| 1.70V | 303 | 254 | 167 | 94.1 | 39.3 | 25.3 | 15.2 | 7.98 | |
| 1.75V | 285 | 239 | 158 | 89.2 | 37.4 | 24.5 | 15.1 | 7.93 | |
| 1.80V | 274 | 230 | 153 | 87.2 | 36.7 | 23.7 | 15.0 | 7.88 | |

Discharge Constant Power (Watts at 77°F25°C)

| End Point | | | | | | | | | |
|------------|-------|-------|-------|-------|-----|------|------|------|--|
| Volts/Cell | 10min | 15min | 30min | 45min | 1h | 2h | 3h | 5h | |
| 1.60V | 605 | 505 | 329 | 241 | 186 | 109 | 79.2 | 53.7 | |
| 1.65V | 583 | 487 | 318 | 234 | 182 | 107 | 77.2 | 52.4 | |
| 1.70V | 560 | 470 | 308 | 227 | 178 | 104 | 75.2 | 51.0 | |
| 1.75V | 537 | 452 | 297 | 220 | 174 | 101 | 73.3 | 50.0 | |
| 1.80V | 515 | 435 | 286 | 212 | 170 | 97.6 | 71.3 | 48.8 | |

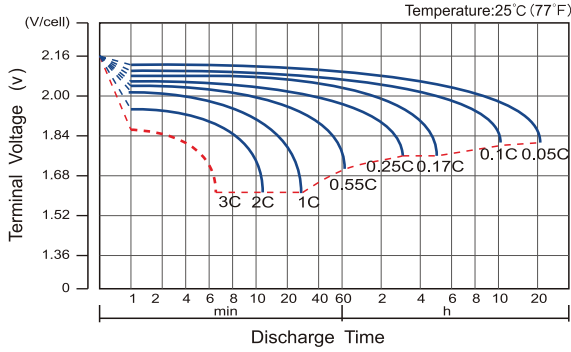
(Note)The above characteristics data are average values obtained within three charge/discharge cycles. All data shall be changed without notice, Neata reserves the right to explain and update the information.

Neata[®] AGM Battery series

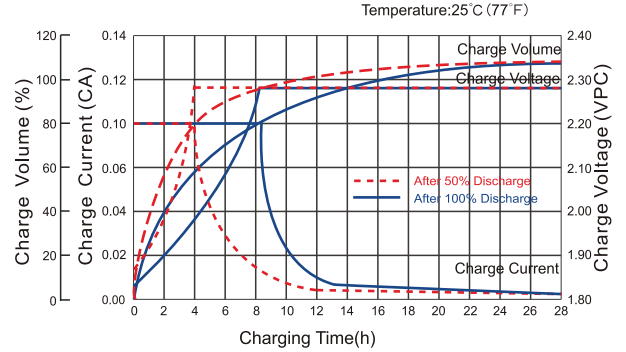
Datasheet : NT12-150(12V150AH)

+ Super energy

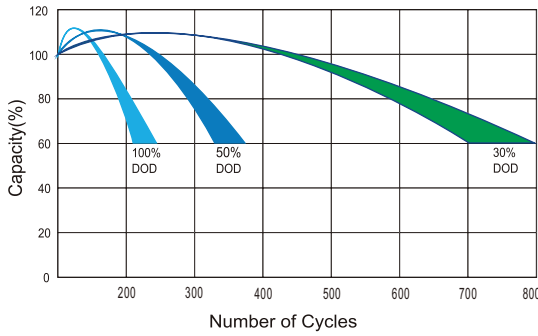
Discharge Characteristics Curve



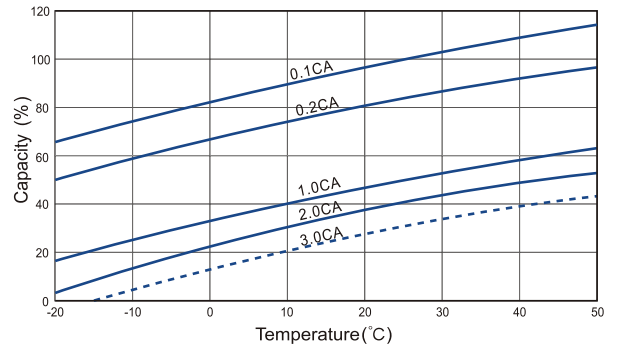
Charge Characteristic Curve For Standby Use



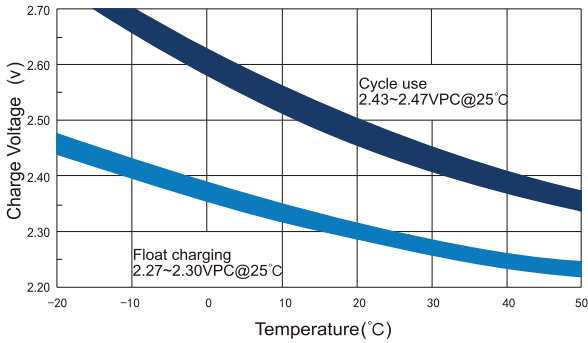
Cycle Life In Relation To Depth Of Discharge



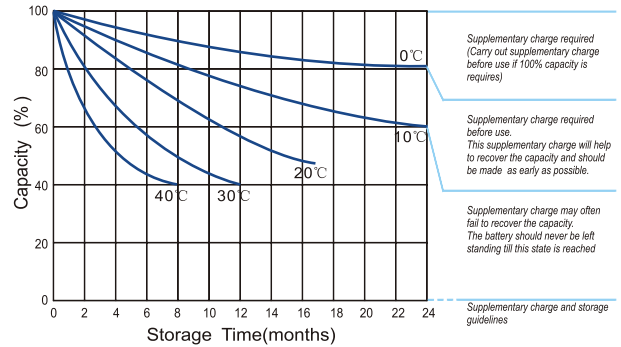
Temperature Effects On Capacity



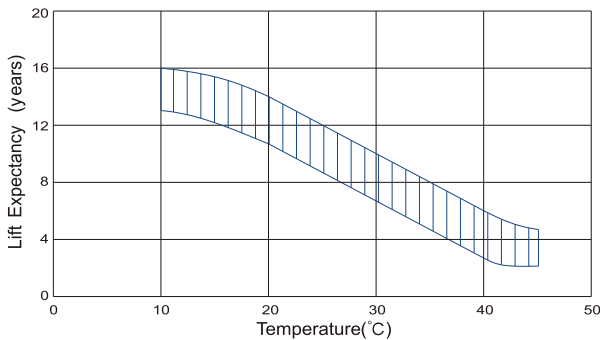
Relationship Between Charging Voltage And Temperature



Storage Characteristics



Effect Of Temperature On Long Term Life



Life Characteristics Of Standby Use

