

Neata[®]

+ Super energy

High Power series

NTH12-55 (12V260W)

Nominal Voltage	12V
Number of cell	6
Design Life	10 years
Nominal Capacity 77°F(25°C)	
10 min wattage @1.6V	260W/cell
20 hour rate (2.90A, 10.5V)	58.0Ah
10hour rate (5.50A, 10.8V)	55.0Ah
Internal Resistance	
Fully Charged battery 77°F(25°C)	≤5.8 mOhms
Self-Discharge	
3% of capacity declined per month at 20°C(average)	
Operating Temperature Range	
Discharge	-20~60°C
Charge	-10~60°C
Storage	-20~60°C
Max. Discharge Current 77°F(25°C)	550A(5s)
Charge Methods: Constant Voltage Charge 77°F(25°C)	
Cycle use	2.40-2.45VPC
Maximum charging current	16.5A
Temperature compensation	-30mV/°C
Standby use	2.20-2.30VPC
Temperature compensation	-20mV/°C



Wide Range Temperature



Warranty



Maintenance Free



High Power Design



easy use

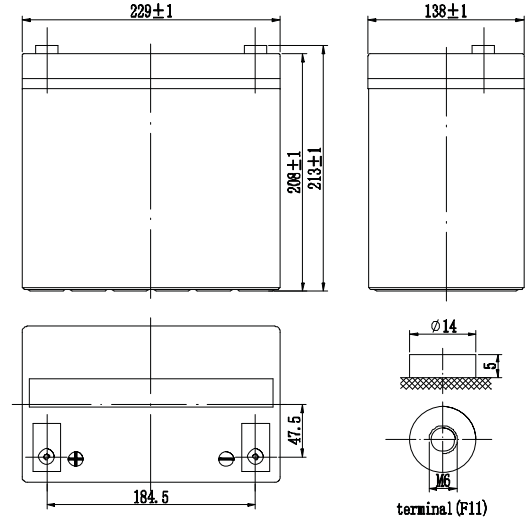


long life

Mechanical Characteristics

Length(mm / inch)	229 / 9.02
Width(mm / inch)	138 / 5.43
Height(mm / inch)	208 / 8.19
Total Height(mm / inch)	213 / 8.39
Approx. Weight(Kg / lbs)	17.2 / 37.9

* Weight deviation: ± 5%



Technical Characteristics

Discharge Constant Current (Amperes at 77°F25°C)

End Point	Volts/Cell	5min	10min	15min	30min	45min	60min
1.60V	189	144	113	73.1	54.0	43.5	
1.65V	178	136	107	69.3	51.4	41.5	
1.70V	167	128	102	65.6	48.8	39.5	
1.75V	155	120	95.9	61.8	46.2	37.5	
1.80V	149	115	92.6	60.2	45.0	36.6	

Discharge Constant Power (Watts at 77°F25°C)

End Point	Volts/Cell	5min	10min	15min	30min	45min	60min
1.60V	352	260	202	124	94.3	76.5	
1.65V	337	250	194	120	91.0	74.4	
1.70V	322	241	187	116	88.6	72.3	
1.75V	307	231	180	112	85.3	70.2	
1.80V	292	221	173	108	82.9	68.1	

(Note)The above characteristics data are average values obtained within three charge/discharge cycles. All data shall be changed without notice, Neata reserves the right to explain and update the information.

SHENZHEN OFFICE (CHINA)
Tel: +86-755-2691-9474
Fax: +86-755-2691-9474

Recognized under CE/ IEC and certified by ISO9001 ,14001



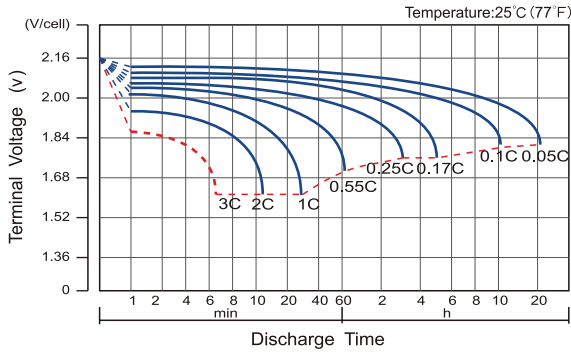
Neata[®] //Shenzhen Neata Power Tech co.,Ltd//www.neata-batt.com

Neata[®] High Power series

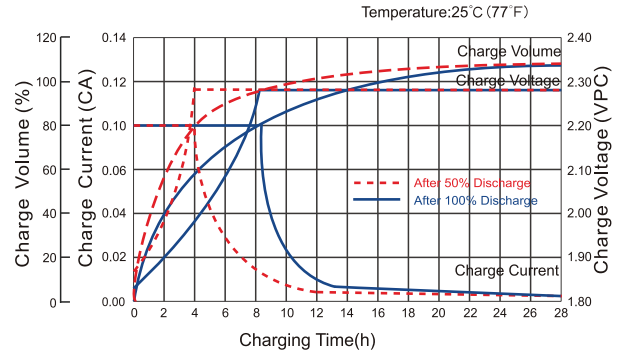
NTH12-55 (12V260W)

+ Super energy

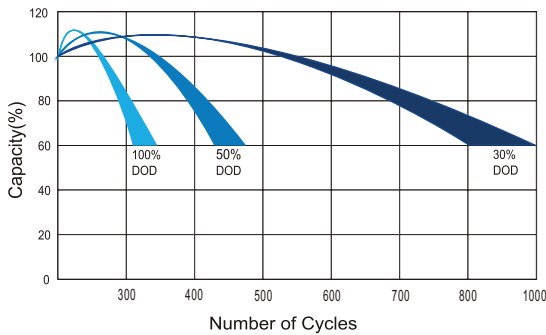
Discharge Characteristics Curve



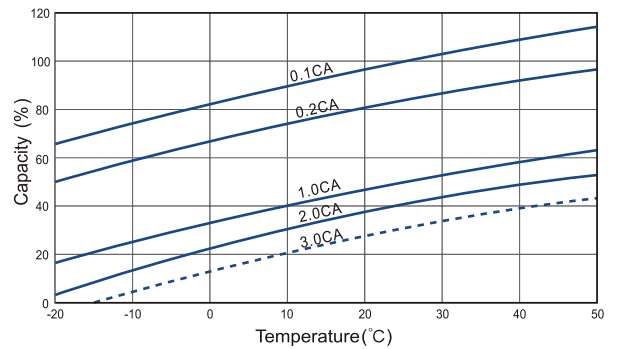
Charge Characteristic Curve For Standby Use



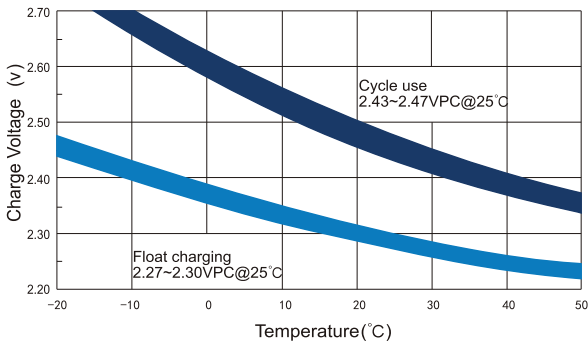
Cycle Life In Relation To Depth Of Discharge



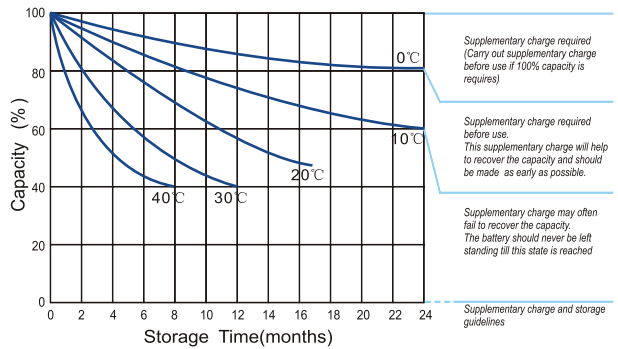
Temperature Effects On Capacity



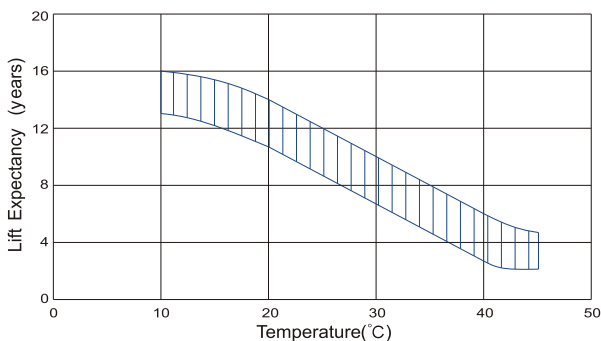
Relationship Between Charging Voltage And Temperature



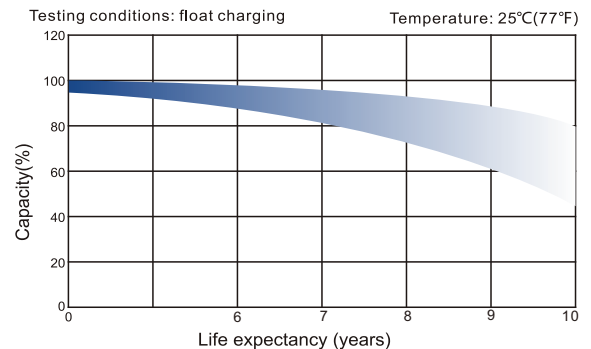
Storage Characteristics



Effect Of Temperature On Long Term Life



Life Characteristics Of Standby Use



SHENZHEN OFFICE (CHINA)
Tel: +86-755-2691-9474
Fax: +86-755-2691-9474

Recognized under CE/IEC and certified by ISO9001,14001

